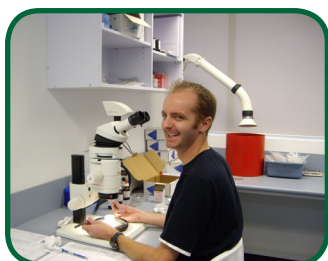




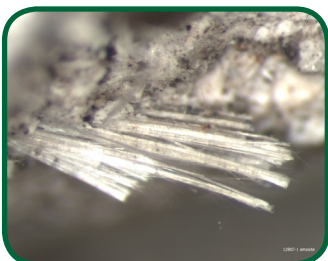
Asbestos Testing in building material such as fibro



Example of asbestos
garage and roof



Matt Mansfield
Asbestos Identifier



Chrysotile fibre
bundle

For further information
contact

The Envirolab Asbestos
department
in Sydney:
12 Ashley Chatswood NSW
2067
02 9910 6200,
enquiries@envirolabservices.
com.au

or

MPL Asbestos department
in Perth
16-18 Hayden Court Myaree
WA 6154
08 9317 2505,
lab@mpl.com.au

Envirolab Services and MPL Laboratories are part of the Envirolab Group and offer an asbestos testing service that allows you to discover whether asbestos is present in any suspected materials such as fibro, eaves, corrugated sheeting and vinyl. This service is open to commercial and domestic customers.

Please note that there are precautions that you should take before attempting to sample any material that is suspected of containing asbestos, as certain materials will release asbestos fibres into the air when broken or disturbed.

If the material you are considering sampling looks like a sprayed finish, particularly if it is insulating material on pipework, boilers or ceilings, do not sample this yourself!

Special precautions are required for sampling this material. Disturbing lagging that contains asbestos is extremely dangerous and should only be carried by qualified individuals.

The instructions below should be considered the minimum precautions you should take when sampling material suspected of containing asbestos. If in doubt, please contact us.

- Dampen or wet the material
- Use pliers, with the inside edges protected with a baby-wipe to break off a small thumbnail sized sample for materials such as fibre boards or similar type material, if unsure of sampling size please do not hesitate to contact us for further information
- When sampling vinyl tiles a minimum of a match box size is recommended to ensure a representative sample.
- Place the sample (and the baby wipe) into a sealable polythene bag - such as a sandwich bag
- Place the bagged sample inside another sealable bag
- Attach a label to the bag identifying the sample type (ceiling tile, fire board, etc) and your name and address
- Seal the area of the sampled material with duct tape, paint or diluted PVA glue solution to avoid fibre release
- Clean any tools used with cold water

When you have your double-bagged sample, you may send (by courier or mail) or bring it to us at :

Envirolab Services 12 Ashley Chatswood NSW 2067 or
MPL Laboratories 16-18 Hayden Court Myaree WA 6154

together with your payment of \$110 including GST per sample: **PLEASE MAKE CHEQUES PAYABLE TO ENVIROLAB SERVICES.** We also accept payment by Visa, Mastercard and direct deposit.

Results will be reported within 2 working days. Please contact us if you wish to have the results faster than this. The fastest time is 2-3 hours however this will attract a surcharge.

You will be given a certificate that identifies whether asbestos is present in the sample and also identifying the type of asbestos that's present.

In most cases, asbestos containing materials can safely be left in place, as there will be little or no risk of fibre release.